

Safe Harbor

Each of the presentations today will contain forward-looking statements about our strategies, products, future results, performance or achievements, financial, operational and otherwise, including statements about our strategic priorities, business model transition, and guidance for the first fiscal quarter and fiscal year 2020; our long term financial and operational goals; our M&A strategy; our capital allocation initiatives; and our stock repurchase program. These statements reflect management's current expectations, estimates and assumptions based on the information currently available to us. These forward-looking statements are not guarantees of future performance and involve significant risks, uncertainties and other factors that may cause our actual results, performance or achievements to be materially different from results, performance or achievements expressed or implied by the forward-looking statements contained in these presentations, such as a failure to maintain ARR, ARPS, subscriptions, billings, revenue, deferred revenue, margins and cash flow growth; difficulty in predicting those financial and performance metrics; failure to maintain spend management; failure to successfully integrate acquisitions and manage transitions to new business models and markets, including our efforts to expand in construction and manufacturing, and attract customers to our cloud-based offerings; failure to successfully expand adoption of our products; and negative developments in worldwide economic or political conditions.

A discussion of factors that may affect future results is contained in our most recent Form 10-K and Form 10-Q filings available at www.sec.gov, including descriptions of the risk factors that may impact us and the forward-looking statements made in these presentations. The forward-looking statements made in these presentations are being made as of the time and date of their live presentation. If these presentations are reviewed after the time and date of their live presentation, even if subsequently made available by us, on our website or otherwise, these presentations may not contain current or accurate information. We disclaim any obligation to update or revise any forward-looking statement based on new information, future events or otherwise.

Non-GAAP Financial Measures

These presentations include certain non-GAAP financial measures. Please see the section entitled "Reconciliation of GAAP Financial Measures to non-GAAP Financial Measures" in the Appendices attached to the presentations for an explanation of management's use of these measures and a reconciliation of the most directly comparable GAAP financial measures.

AUTODESK INVESTOR DAY

MARCH 28, 2019

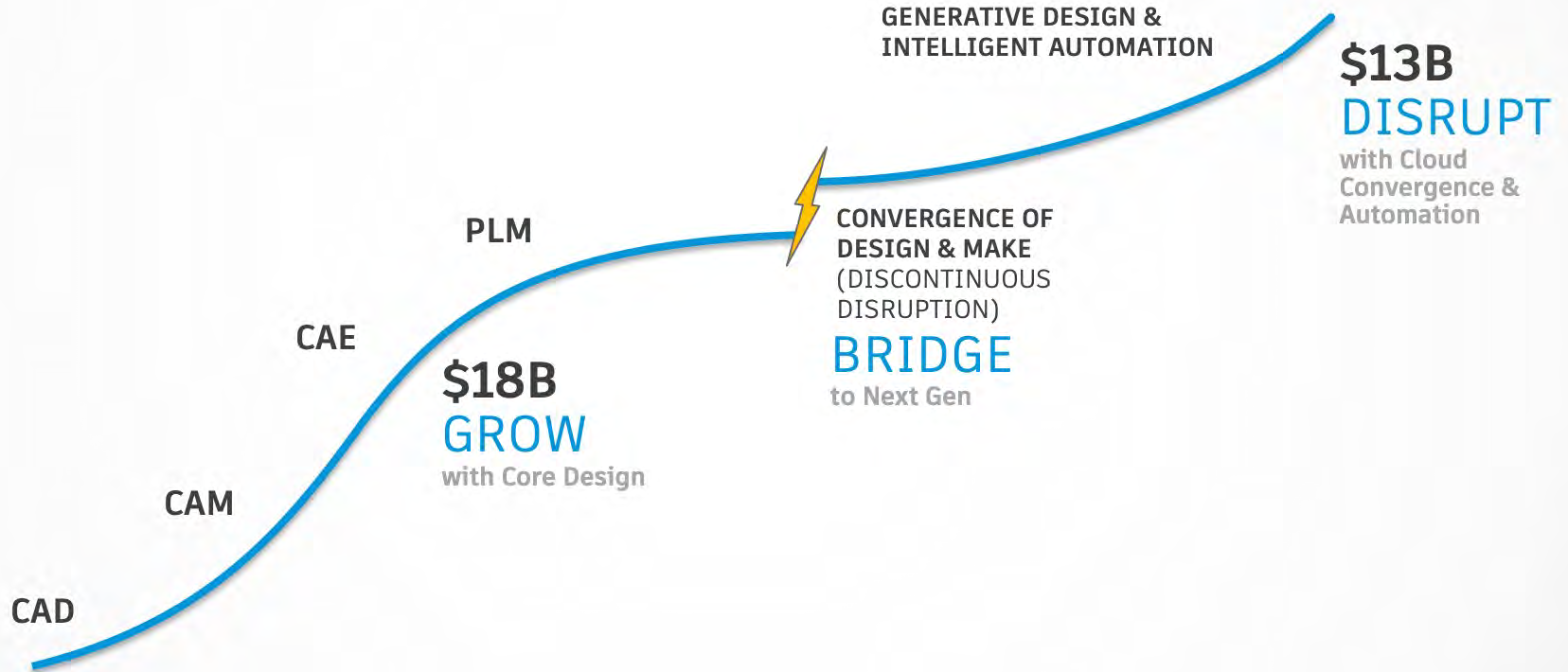
Future of Manufacturing and Cloud

Scott Reese

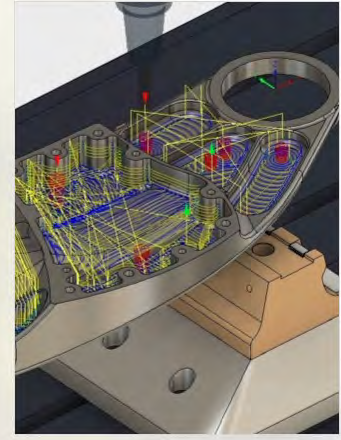
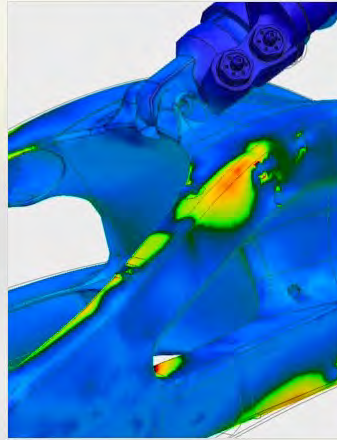
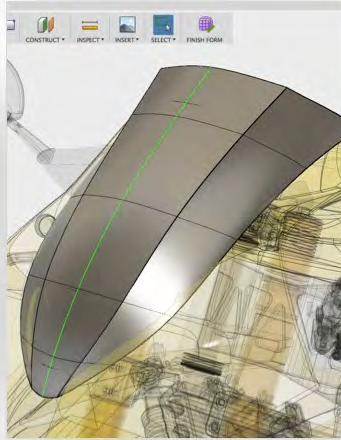
SVP, Manufacturing, Cloud, and Production Products



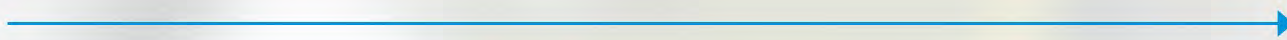
Discontinuous Disruption Powers Opportunity



Fusion 360 Spans Design to Make



DESIGN



MAKE

Fusion 360 Spans Design to Make

FUSION TEAM

Secure | <https://autodesk2802.autodesk360.com/g/projects/2017101298126756/data/dXJuOmFkc2sud2lwcHJvZDpncy5mb2kxXl6Y28uRnJlVjA0YjJTYVNa3owRXdXQVEyQQ/dXJuOmFkc2sud2lwcHJvZDpkbS5saW5lYWdlOjhnNHhk2aDIWUk5lOEZ...>

Lightning Moto...les > Assembly > Team > LS-218 (Dev)

LS-218 (Dev) V.8

In use by Bryce Heventhal

Fusion Design | Shared Link [Off](#)

Last Updated on 56 minutes ago
By Bryce Heventhal

Design References

USES (7) USED IN DRAWINGS

- shock_bottom V.1
- swingarm CNC'ed V.1
- Assembly, Battery... V.1
- Radiator, Chargin... V.1
- Motor V.1
- Caliper, Brembo, ... V.1
- Assembly, Bodyw... V.1

Related Data

CAM (1) ANIMATION (1) RENDERINGS (4)

COMMENTS
2 comments in this version

Version 8 (2 Comments)

- Marti Deans**
2:10 PM, Jun 05, 2018

Final frame assembly completed, ready for paint
- Bryce Heventhal**
2:11 PM, Jun 05, 2018
Notify Contractor now to get quote on paint for this job.
- Bryce Heventhal**
2:59 PM, Jun 05, 2018

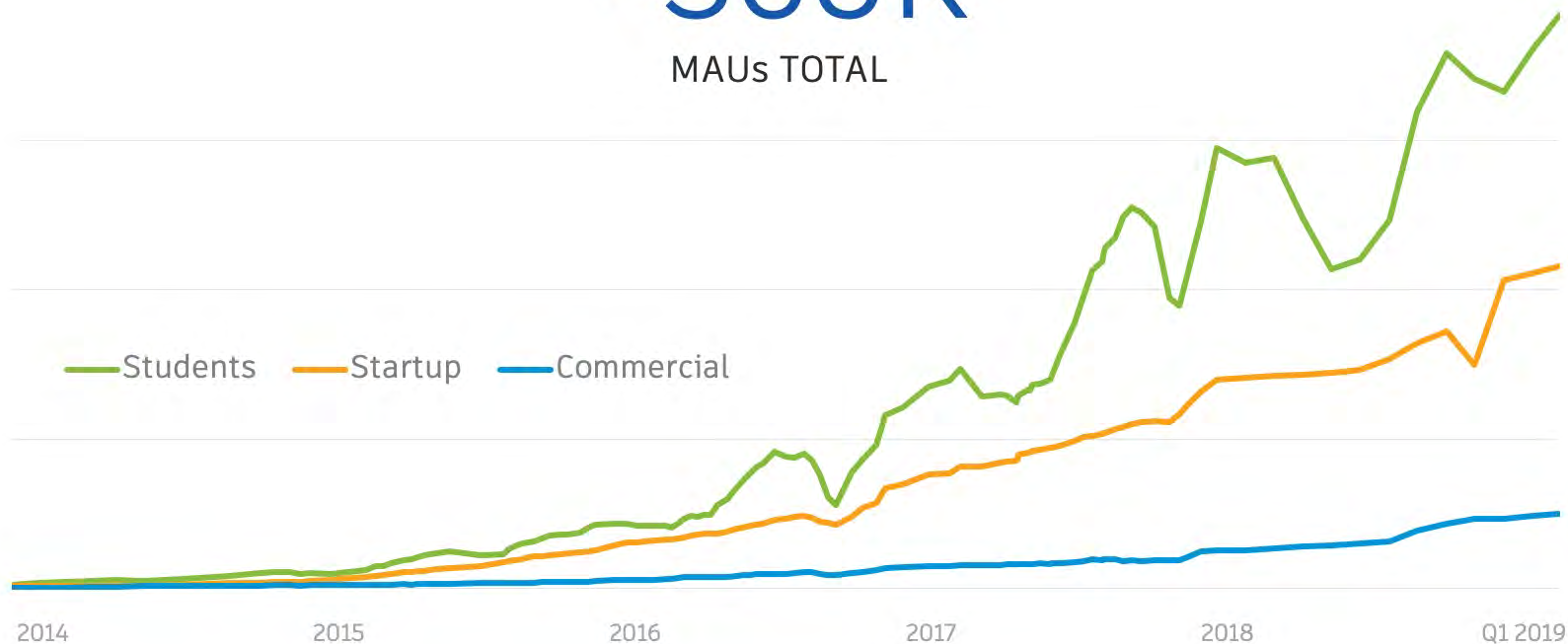
[View and manage comments](#)

Fusion 360 Monthly Active Users

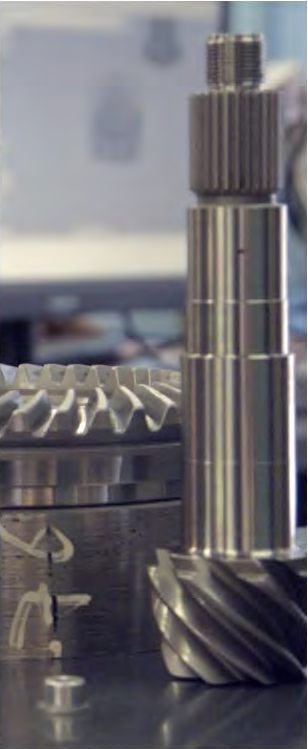
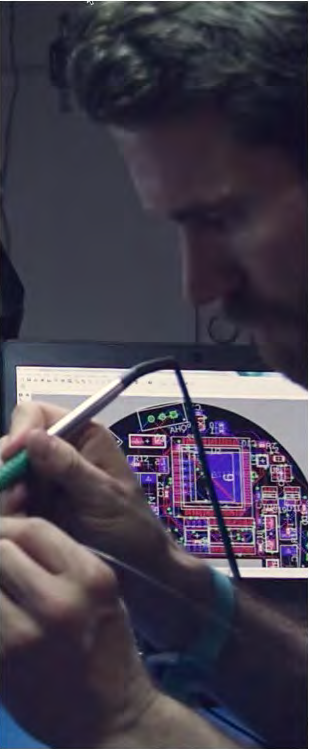
3x growth in last 18 months and accelerating

~360K

MAUs TOTAL



Fusion 360: Broad Appeal Across Segments



fabric[®]

Steelcase

MODBOT

SWISSOMATION
AMERICA'S ULTRA PRECISION EXPERTS

kmp
DRIVETRAIN
SOLUTIONS

GM General Motors

Fusion 360 is Attracting Attention

“ THE GOAL [OF FUSION 360] IS TO OFFER A SERIES OF TOOLS, ASSEMBLED IN ONE PLACE WITH DEEP INTEGRATION WHERE **EVERYTHING IS SEAMLESSLY CONNECTED.** ”

Engineering.com
August 14, 2018

“ THE GENERATIVE DESIGN FUNCTIONALITY IN FUSION 360 FROM AUTODESK IS AN EXAMPLE OF THE NEW TECHNOLOGY THAT **WILL TAKE MANUFACTURING INTO THE FUTURE.** ”

Machine Design.com
August 21, 2018

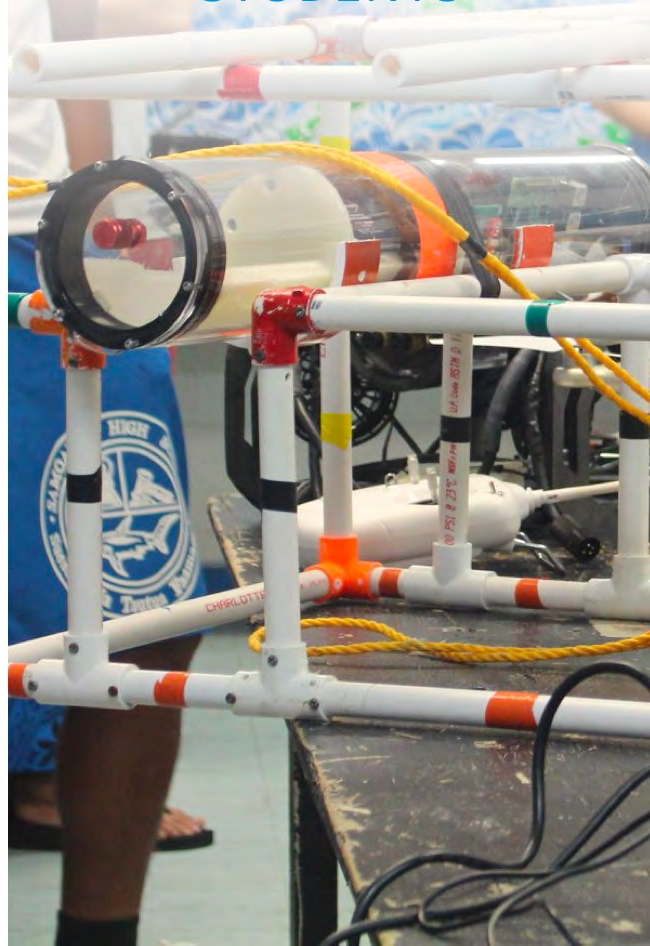
“ **FUSION 360 IS REALLY ON FIRE!** ”

3D Printing Industry.com
March 8, 2019

STARTUPS



STUDENTS

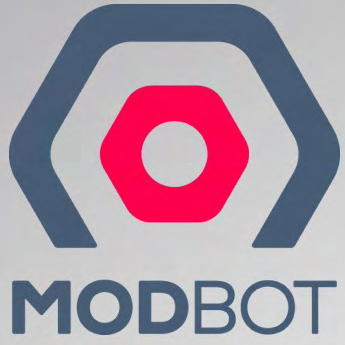


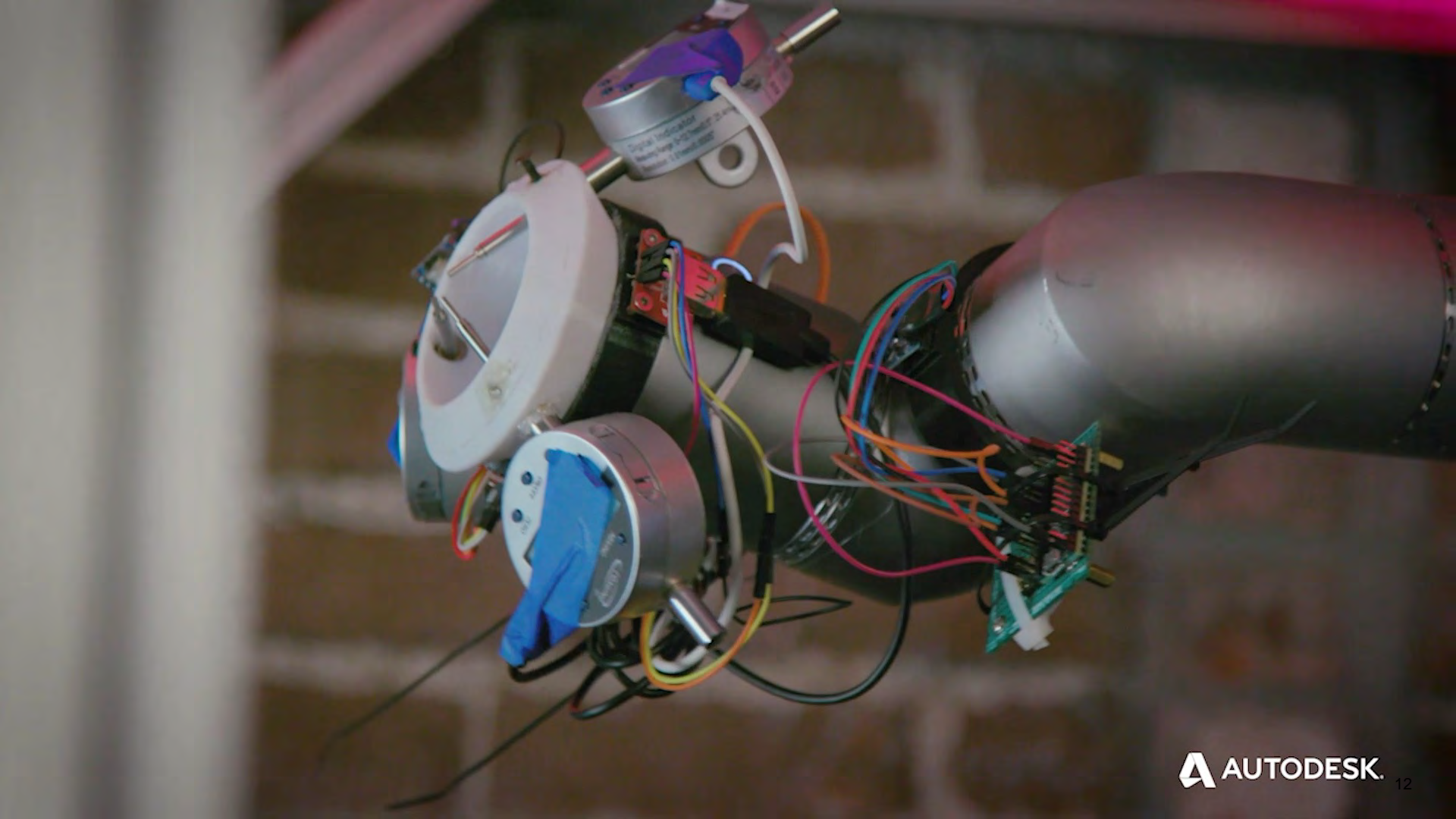
COMMERCIAL SUBSCRIBERS



STARTUPS









MODULAR ROBOTICS STARTUP

Needs

- Collaborative, global design process

Offers

- Plug-and-play modular platform
- Seamless collaboration with global stakeholders
- Ability to service large and small firms alike

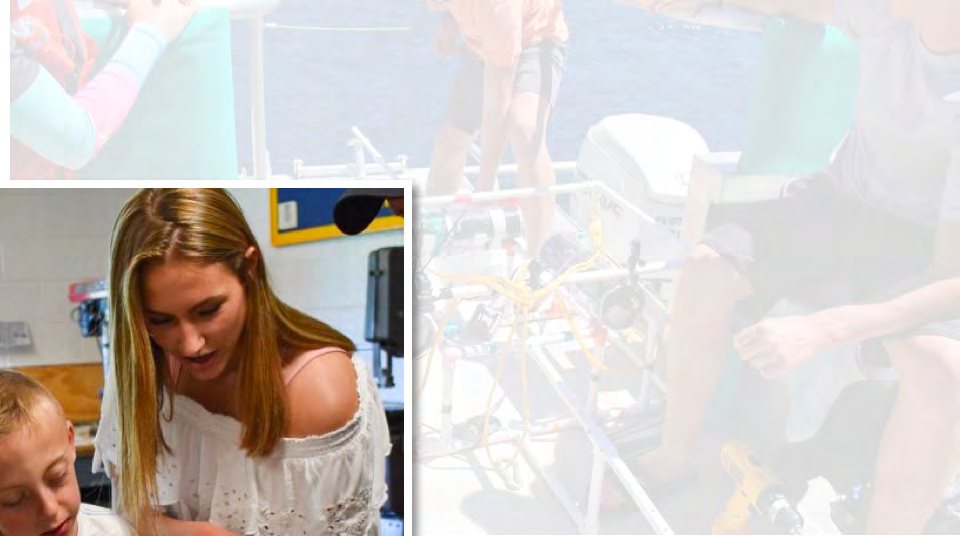
STARTUPS

STUDENTS

COMMERCIAL
SUBSCRIBERS









STUDENT ROBOTICS TEAM

Needs

- 3-D modeling and CAD drawings
- Online tools

Offers

- ROV robots with underwater cameras
- Toolset to make real-world impact

STARTUPS



STUDENTS

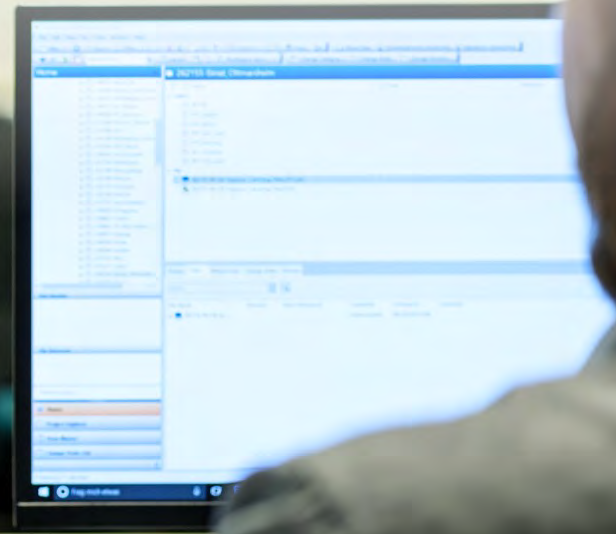


COMMERCIAL
SUBSCRIBERS



Generative Design

Algorithmic exploration of design to make



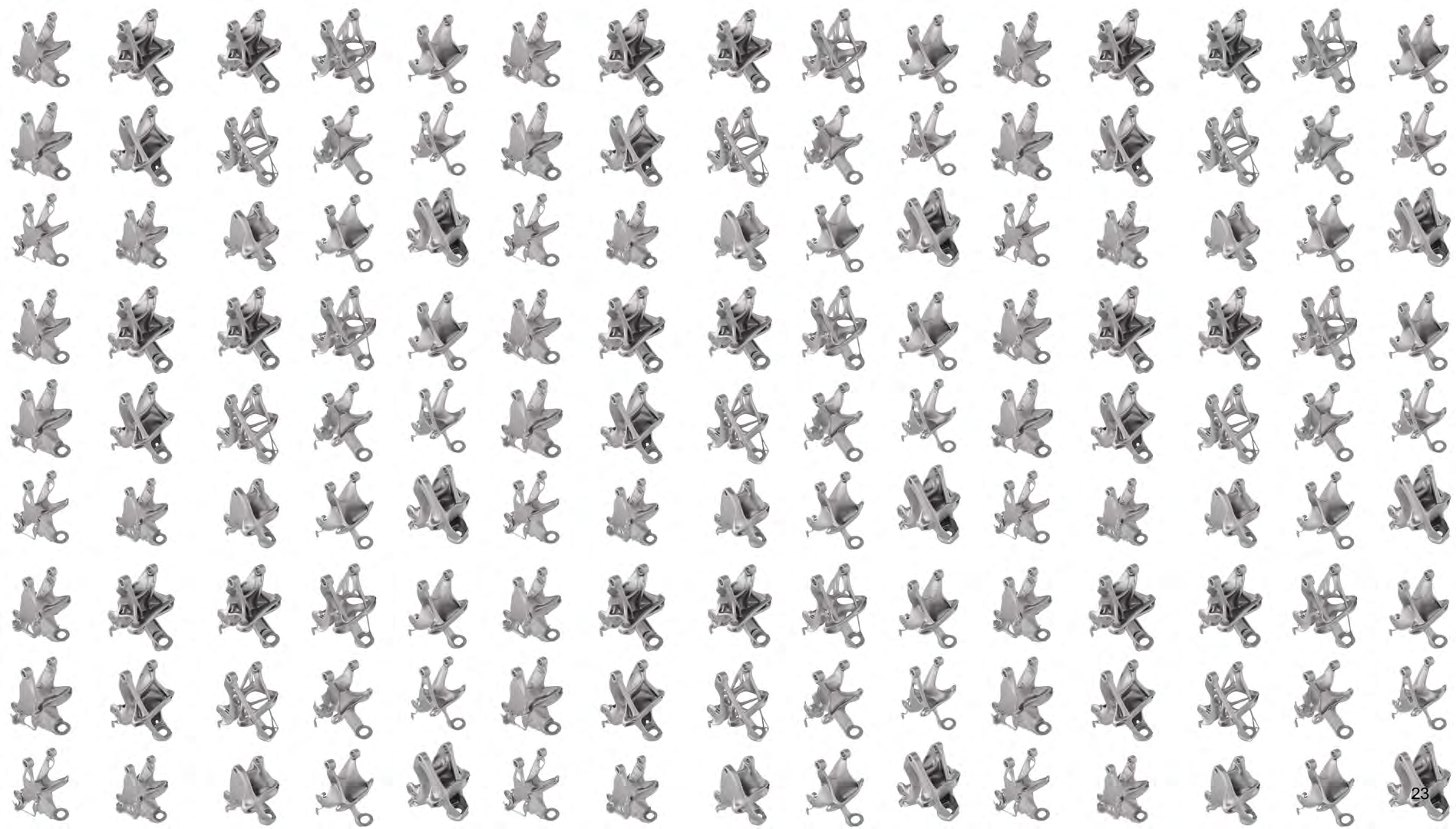
GENERATIVE DESIGN

- Define design parameters
- Algorithm generates infinite manufacturable options
- Designer/engineer selects best solution













GLOBAL AUTOMOTIVE BRAND

Needs

- Reduce weight
- Innovate on traditional design

Offers

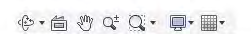
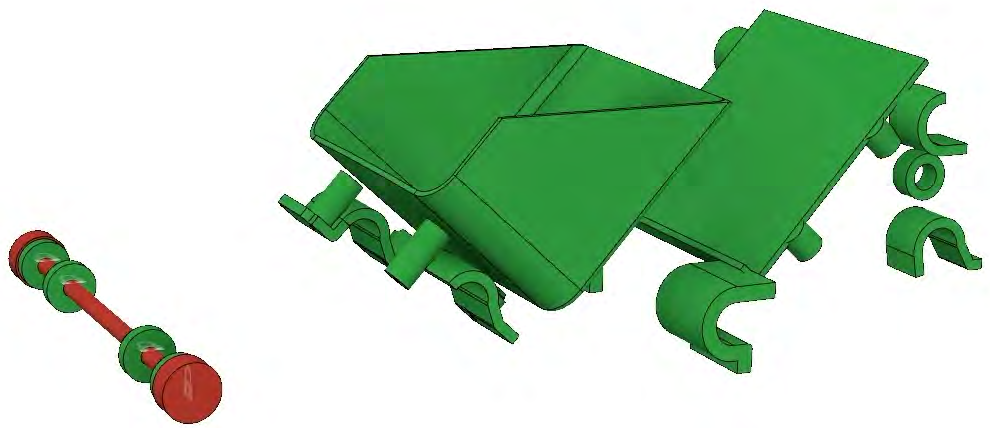
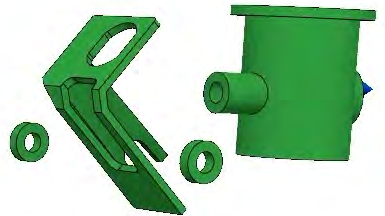
- Consolidated 8 parts into 1 | 40% Lighter | 20% Stronger
- Improved efficiency and performance at scale
- Reduced tooling cost



WHILL











WHILL

MOBILITY STARTUP

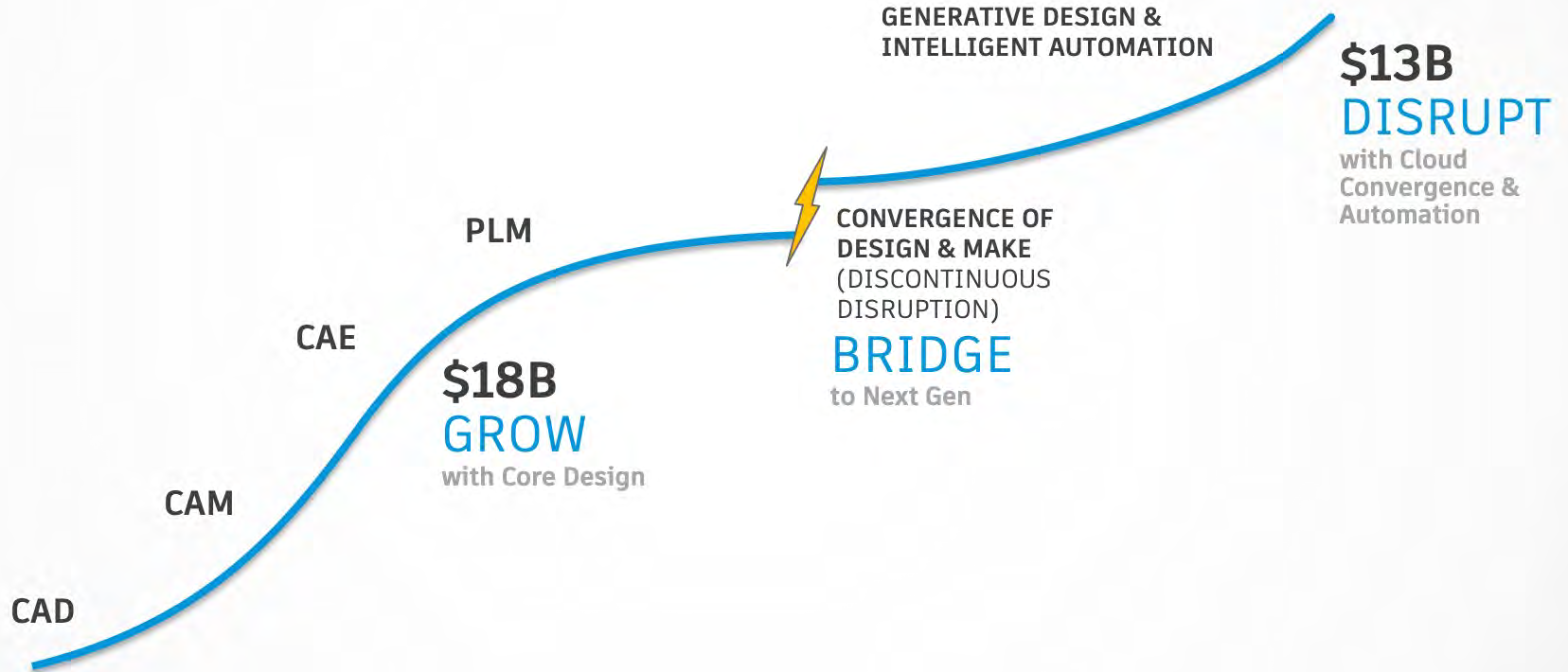
Needs

- Easily foldable and storable, lightweight wheelchair

Offers

- Each part reduced from 20 kg to less than 15 kg
- Reduced number of individual components
- Mobile and travel-friendly

Discontinuous Disruption Powers Opportunity

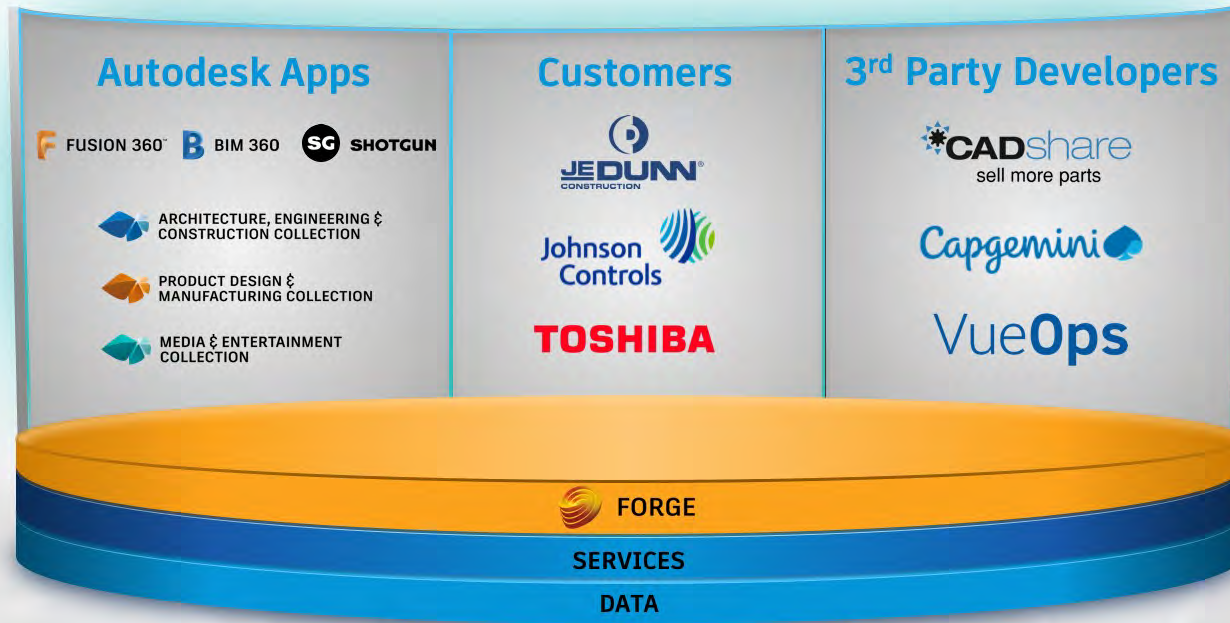




FORGE



Forge Ecosystem



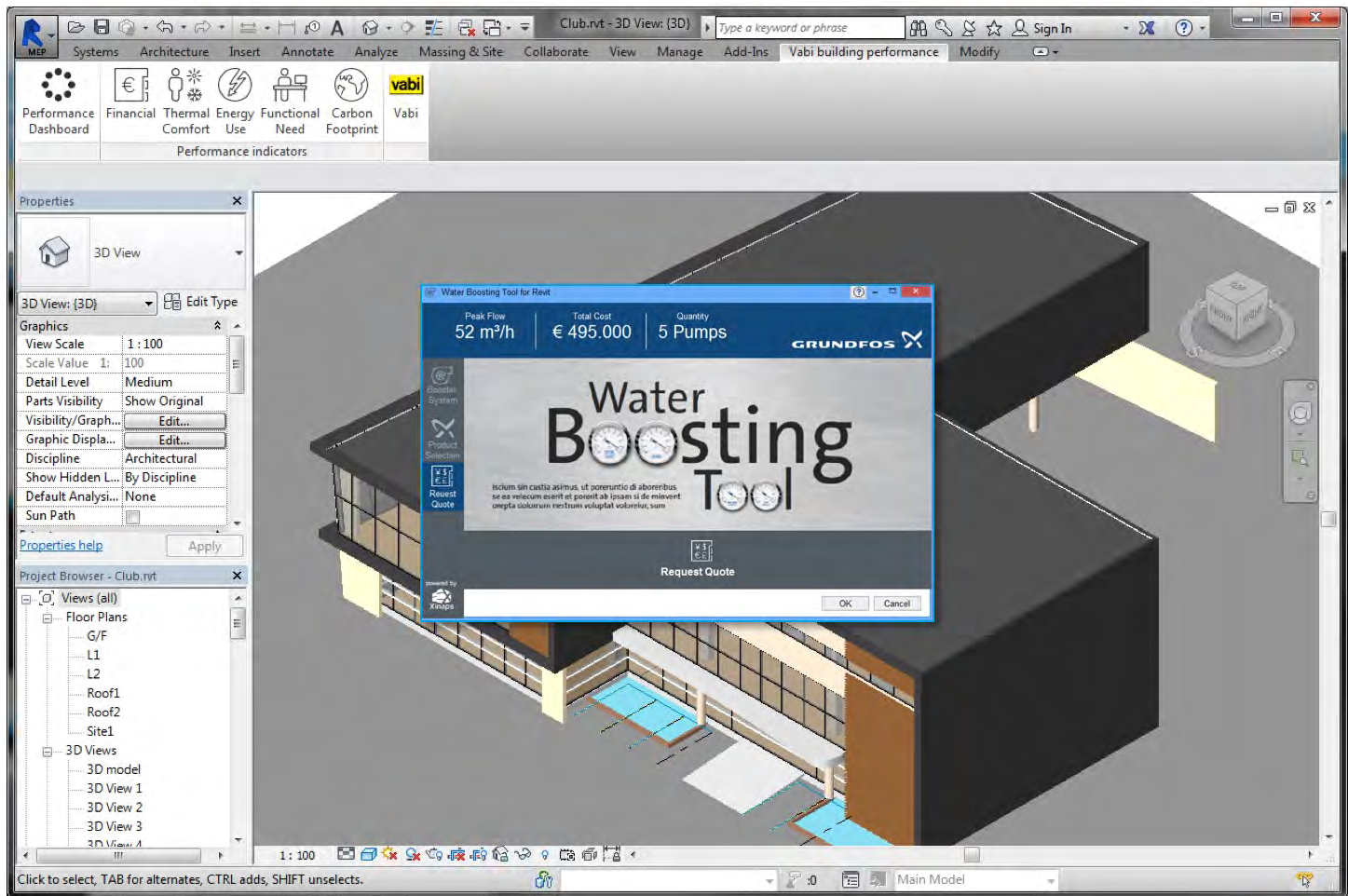
Forge API Calls

47B

TOTAL API CALLS









FORGE PARTNER

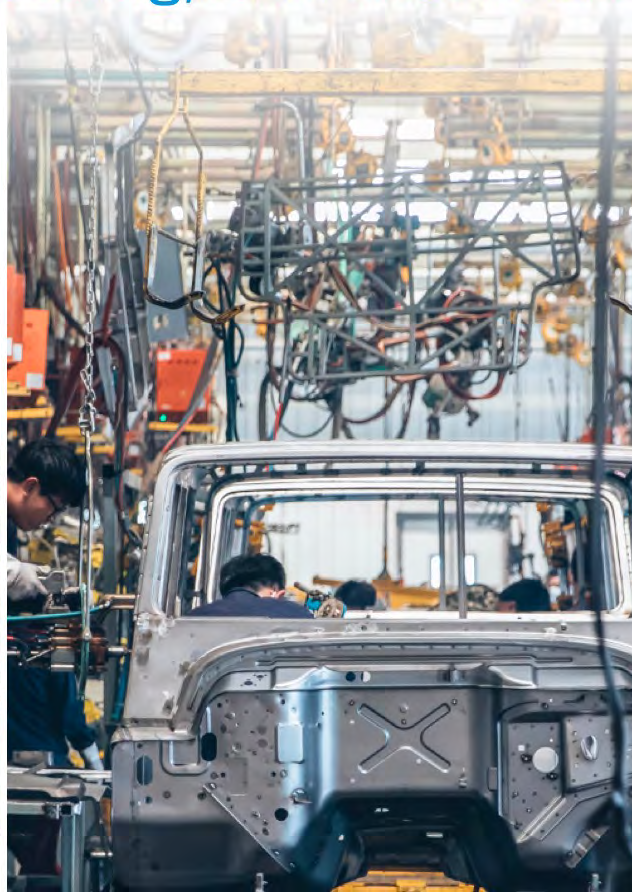
Needs

- Global data platform that streamlines the process of rationalizing varied data formats

Offers

- Built tools for architects and engineers that have reduced task times for customers from days to minutes

Forge is the Platform for AEC, Manufacturing, and Media & Entertainment





AUTODESK®

Make anything™