

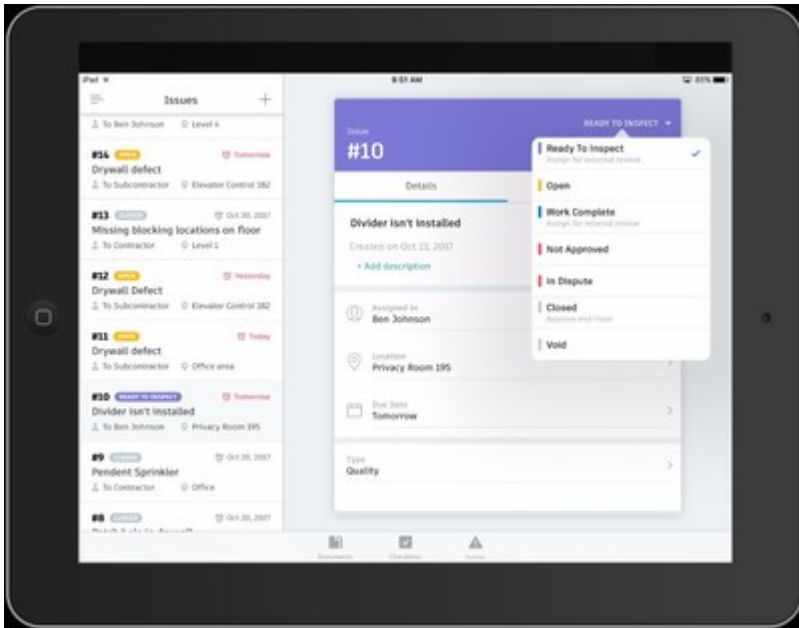


Autodesk Previews Next Generation BIM 360 Platform Connecting the Entire Construction Process

Nov 13, 2017

New Connect and Construct Exchange partner program tames construction app chaos

LAS VEGAS, Nov. 13, 2017 /PRNewswire/ -- At its 25th annual flagship user conference, Autodesk University, [Autodesk, Inc.](http://Autodesk.Inc) (NASDAQ: ADSK) previewed its next generation [BIM 360 platform](#), a seamless cloud service connecting the entire construction project lifecycle. Autodesk also launched the "Connect and Construct Exchange," a new BIM 360 integration partner program designed to bring third-party software applications and data into the BIM 360 construction workflow. The Connect and Construct Exchange launched with more than 50 inaugural BIM 360 integrators.



The next generation of BIM 360, built on the Autodesk Forge platform, supports informed decision-making throughout the construction project lifecycle by centralizing all project data in a single place. Autodesk Forge is a connected developer cloud platform which enables customers and partners to create customized, scalable solutions for engineering, construction and manufacturing challenges. BIM 360 connects project stakeholders and workflows at all stages of the building lifecycle – from design to construction to operations, from the field to the office and back. BIM 360 removes the uncertainty that plagues construction projects of all sizes by pairing its project management tools and database with machine learning analytics and insights. The result is closer collaboration among project teams, greater transparency about changes, and improved data continuity that translates into increased profitability.

"Construction projects are growing more complex, but Autodesk meets that challenge head-on with BIM 360, making construction work safer, simpler, and connected," said Andrew Anagnost, president and CEO, Autodesk. "With the confusion of an ever-increasing number of construction apps across the industry, the option to manage all project data in a single cloud platform results in more predictable building project outcomes."

Developed with Autodesk Construction Industry Customers

The new BIM 360 platform is a result of collaboration between Autodesk and 500 construction professionals from 100 organizations who informed the company's software development process. Autodesk BIM 360 solutions presently house almost four million models, and BIM 360 customers have logged approximately 200 million field observations.

"Autodesk made it a priority to work in lock-step with construction professionals to build the BIM 360 platform, which has resulted in a game-changing project management service," said Andy Leek, director, Virtual Design and Construction at PARIC, a St. Louis, Missouri based construction services firm. "Construction software is so fragmented with endless vendors claiming to offer the best mousetrap for each particular process. PARIC is trying to solve all of our problems as seamlessly as possible, and Autodesk BIM 360 could ultimately be our backbone to connect everyone from design to ownership in one place."

Connect and Construct Exchange

BIM 360 connects fragmented workflows across preconstruction, execution, fabrication, installation, and facility management. The new Autodesk Connect and Construct Exchange launched today adds value for each of these phases of construction with an inaugural group of more than 50 BIM 360 integration partners of which more than 40 are now available on the exchange. The exchange's goals are to showcase, catalogue and generate awareness for all applications and integrations to the next-generation BIM 360 platform so customers and partners have a broad choice of solutions to enhance and extend their workflow to better meet their unique construction needs.

"Rhumbix enables construction teams to manage timekeeping, quantity tracking, and other critical tasks from the palm of a hand with just two taps on a mobile device," said Zach Scheel, CEO, Rhumbix. "Our seamless integration with BIM 360 ensures that everything on the job site is tracked and communicated back to the home office and field trailer."

Rhumbix modernizes construction field operations, helping builders go paperless in the field and improving how they measure and manage labor productivity to be more profitable.

Availability

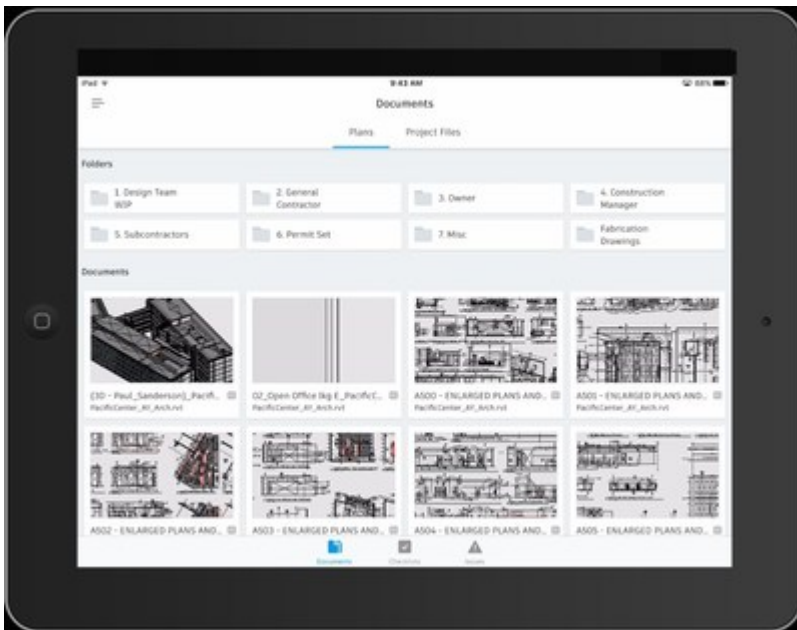
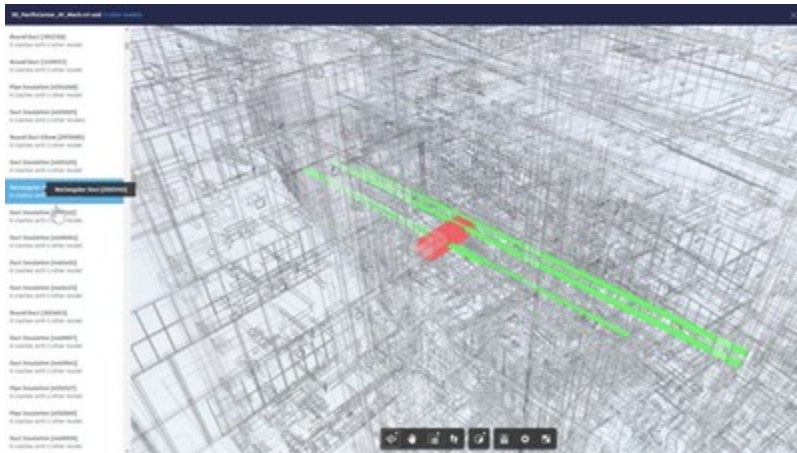
Available immediately. Learn more about Autodesk's next generation [BIM 360 platform](#) preview. Visit [Connect and Construct Exchange](#) for more information on Autodesk BIM 360 integration partners.

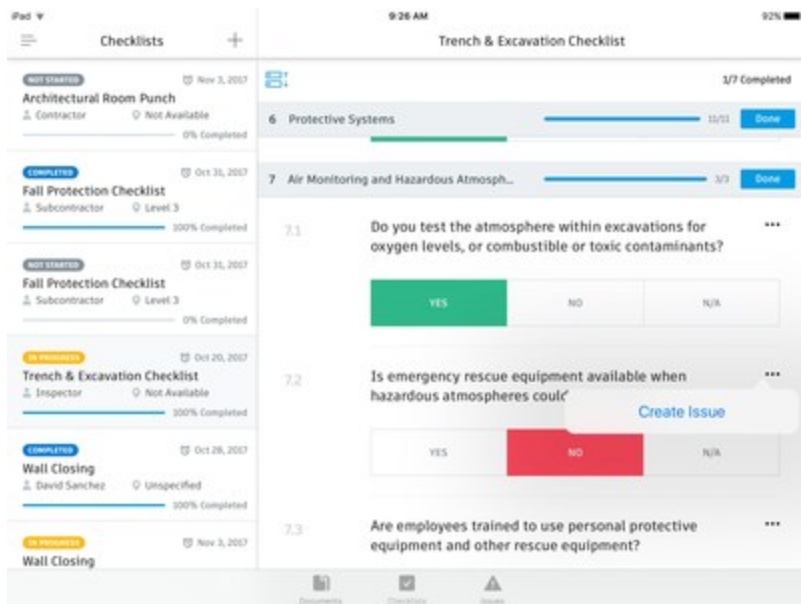
About Autodesk

Autodesk makes software for people who make things. If you've ever driven a high-performance car, admired a towering skyscraper, used a smartphone, or watched a great film, chances are you've experienced what millions of Autodesk customers are doing with our software. Autodesk gives you the power to make anything. For more information visit [Autodesk](#) or follow [@autodesk](#).

Autodesk, the Autodesk logo and BIM 360 are registered trademarks or trademarks of Autodesk, Inc., and/or its subsidiaries and/or affiliates in the USA and/or other countries. All other brand names, product names, or trademarks belong to their respective holders. Autodesk reserves the right to alter product and services offerings, and specifications and pricing at any time without notice, and is not responsible for typographical or graphical errors that may appear in this document. Autodesk, Inc. All rights reserved.

© 2017 Autodesk, Inc. All rights reserved.





View original content with multimedia: <http://www.prnewswire.com/news-releases/autodesk-previews-next-generation-bim-360-platform-connecting-the-entire-construction-process-300554453.html>

SOURCE Autodesk, Inc.

Brian Farber, 917-568-5066, brian.farber@autodesk.com